

P, R, SE

**По вопросам продаж и поддержки обращайтесь:**

Алматы (7273)495-231  
Ангарск (3955)60-70-56  
Архангельск (8182)63-90-72  
Астрахань (8512)99-46-04  
Барнаул (3852)73-04-60  
Белгород (4722)40-23-64  
Благовещенск (4162)22-76-07  
Брянск (4832)59-03-52  
Владивосток (423)249-28-31  
Владикавказ (8672)28-90-48  
Владимир (4922)49-43-18  
Волгоград (844)278-03-48  
Вологда (8172)26-41-59  
Воронеж (473)204-51-73  
Екатеринбург (343)384-55-89  
Иваново (4932)77-34-06  
Ижевск (3412)26-03-58  
Иркутск (395)279-98-46  
Казань (843)206-01-48  
Россия +7(495)268-04-70

Калининград (4012)72-03-81  
Калуга (4842)92-23-67  
Кемерово (3842)65-04-62  
Киров (8332)68-02-04  
Коломна (4966)23-41-49  
Кострома (4942)77-07-48  
Краснодар (861)203-40-90  
Красноярск (391)204-63-61  
Курск (4712)77-13-04  
Курган (3522)50-90-47  
Липецк (4742)52-20-81  
Магнитогорск (3519)55-03-13  
Москва (495)268-04-70  
Мурманск (8152)59-64-93  
Набережные Челны (8552)20-53-41  
Нижний Новгород (831)429-08-12  
Новокузнецк (3843)20-46-81  
Ноябрьск (3496)41-32-12  
Новосибирск (383)227-86-73  
Киргизия +996(312)-96-26-47

Омск (3812)21-46-40  
Орел (4862)44-53-42  
Оренбург (3532)37-68-04  
Пенза (8412)22-31-16  
Петрозаводск (8142)55-98-37  
Псков (8112)59-10-37  
Пермь (342)205-81-47  
Ростов-на-Дону (863)308-18-15  
Рязань (4912)46-61-64  
Самара (846)206-03-16  
Саранск (8342)22-96-24  
Санкт-Петербург (812)309-46-40  
Саратов (845)249-38-78  
Севастополь (8692)22-31-93  
Симферополь (3652)67-13-56  
Смоленск (4812)29-41-54  
Сочи (862)225-72-31  
Ставрополь (8652)20-65-13  
Сургут (3462)77-98-35  
Казахстан +7(7172)727-132

Сыктывкар (8212)25-95-17  
Тамбов (4752)50-40-97  
Тверь (4822)63-31-35  
Тольятти (8482)63-91-07  
Томск (3822)98-41-53  
Тула (4872)33-79-87  
Тюмень (3452)66-21-18  
Ульяновск (8422)24-23-59  
Улан-Удэ (3012)59-97-51  
Уфа (347)229-48-12  
Хабаровск (4212)92-98-04  
Чебоксары (8352)28-53-07  
Челябинск (351)202-03-61  
Череповец (8202)49-02-64  
Чита (3022)38-34-83  
Якутск (4112)23-90-97  
Ярославль (4852)69-52-93



# Mop soaking systems

## MOP SOAKING ON DEMAND AND PRE-SOAKING SYSTEM

### WHY CHOOSE A MOP SOAKING SYSTEM?

#### Advantages:

- **Reduced risks of bacterial cross-contamination:** always clean detergent solution and use of one mop for each room
- **Environmentally friendly:** higher control of chemical solution with reduced chemical and water waste, lower environmental impact if compared with traditional mopping systems employing bucket and mop
- **Better ergonomics:** no rinsing and wringing; consequently, less effort for the operator and reduced costs for industrial accidents and illness leaves
- **Easy to use:** simple to use, systems that make it easier to train the staff
- **Reduced costs for cleaning:** reduced working hours guarantee reduced labour costs
- **Excellent results in cleaning and hygiene:** thanks to the combination of mop soaking system and microfiber

### MOP SOAKING SYSTEMS

#### 1 Mop soaking system on demand:

Single mop soaking on demand directly on the trolley by means of the specific Equodose dosing station.

#### 2 Pre-soaking system:

Pre-soaking system in advance, preparing the mops before use, normally in specific places, employing hermetic **Top-Down®** buckets or **plastic drawers**.



EQUODOSE system



TOP-DOWN® system



System with drawers

### COMPATIBILITY

Filmop mop soaking systems fit:



Strap tape system



Pocket mop system



Duo Face system



Click Safe System

#### Mop soaking system on demand



Alpha

#### Pre-soaking system



Vega Top-Down®



Arka Top-Down®



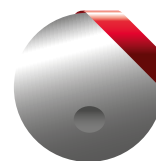
Morgan Top-Down®



Alpha



## EQUODOSE® PATENTED SYSTEM



**Equodose** is the innovating **mechanical dosing device** developed by Filmop to make the **mop soaking on demand** directly on site. This system is designed with an **adjustable dosing mechanism** according to the features of the mops to use and the surfaces to clean.



### Features:

- **Totally mechanical and without electrical parts:** dosage is regulated by means of a graduated dial and operated thanks to a hand lever.
- **Strong and easy to maintain:** made of high quality polypropylene (Made in Italy), easy and low maintenance is required.
- **Safe and as by law enacted:** the graduated dial and tank can be blocked with the specific safety key device to avoid any tampering or improper use; hand level with push button to block the solution dispensing mechanism.
- **Modular design:** available with 1 or 2 tanks to increase the dosing system autonomy or to operate with two different detergents/cleaning solutions at the same time.
- **Versatile:** fitting Alpha line of trolleys. Suitable for several kinds of mops and mop holders: strap tape system, pocket mop system and Duo Face mop system (only fitting 40 cm mop systems).

### Advantages:

- **Prompt and ready in the working place:** mop soaking on demand and directly on site, just the necessary mops, even one single mop!
- **Minimum overall dimensions:** ideal in environments where there is a lack of big spaces to prepare and stock the pre-soaked mops and the hermetic buckets.
- **Eco-friendly product, low environmental impact:** water and detergent saving, as this system allows to soak only the necessary mops, eliminating any unnecessary washing of unused reserve mops in the washing machine. No need of electric power, no need of power supply, made of 100% recyclable plastic.
- **Easy to use:** just a few and simple steps and the mops are ready to use, high intuitive system.
- **Flexible:** you can regulate very accurately the right solution for each single mop according to the features of the surface to clean, the degree of dirt and the absorbing capacity of the mop.
- **High standards of hygiene:** reduction of cross-contamination risks, making easy and simple to clean each room with a different and ever clean mop. Tanks preserve active principles of some chemical solutions that could become less effective over time: this system is ideal for hospitals and healthcare facilities.





# Mop soaking systems

## MOP SOAKING ON DEMAND AND PRE-SOAKING SYSTEM

### Dosing system

**Increased flexibility:** the 50 ml to 350 ml adjustable system ensures better detergent solution dosing precision also for the lightest cloths, such as surface mops for hand use, further reducing waste



### Sealed reservoir

**More effective:** hermetic tank thanks to the internal washer of the cap, better preservation of the cleaning solution

**Higher safety:** the cap locking system improves the safety level

**Better hygiene:** the reservoir design facilitates easy cleaning and good long-term maintenance



### How to use it



Rotate the graduated dial from 50 ml to 350 ml to choose the right dose of solution. If necessary, remove the safety key to lock the dial and keep the right dosage.



Push the mechanical hand lever completely down.



Take a clean mop and lay it in the tray ready for soaking with the cleaning side downwards. Wait for a few seconds for a complete and uniform mop soaking. This system is suitable for several kinds of mops, but only for 40 cm mop sizes.



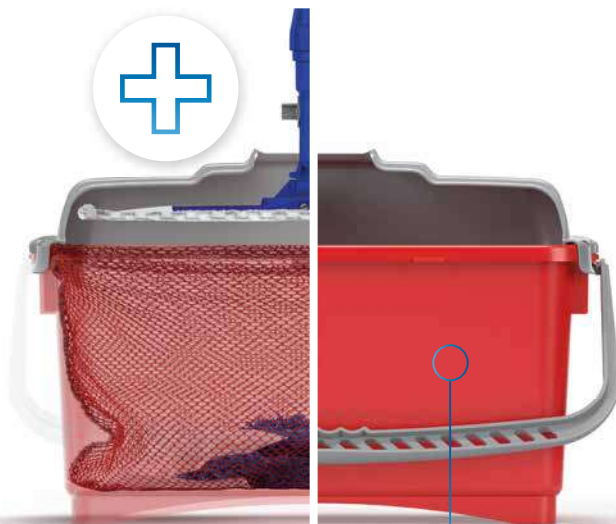


## **NEW** Click Safe: guaranteed hygiene, health protection

**Click Safe** is a **touchless cleaning system** consisting of folding mop holder and bucket with lid that can be combined with the mesh bag, designed to make operations easier, more hygienic and safer.



The mop holder hooks the mop easily and immediately while the lid instantly releases it directly into the bucket, the operator does not need to touch it with the hands and bend over.



The special bag completes the job: placed in the bucket, it collects used mops making emptying and handling of laundry operations even faster and more hygienic.



**plastic**  
second life  
MIX ECO



Combining Click Safe with **soaking systems** helps to maintain a high level of hygiene throughout the cleaning procedure, lowering the risk of cross-contamination.

The Equodose mechanical dispenser for soaking on demand and **Top-Down** hermetic buckets for pre-soaking allow each area to be cleaned with a different mop or cloth while the touchless system allows them to be disposed of effectively preventing the spread of bacteria and viruses.





# Mop soaking systems

## MOP SOAKING ON DEMAND AND PRE-SOAKING SYSTEM

### Equodose

#### EQUODOSE - dosing device with one tank 6 L for mop soaking on demand



REF.	NOTES	PCK	VOLUME (m³)	GROSS WEIGHT (kg)	SIZE (cm)
P320100UA	with EPDM seals	1	0,09	6,01	28x55x55
P320101UA	with Viton seals	1	0,09	6,01	28x55x55

⚠ ATTENTION: only for system 40 cm

#### EQUODOSE - dosing device with two tanks 6 L for mop soaking on demand







REF.	NOTES	PCK	VOLUME (m³)	GROSS WEIGHT (kg)	SIZE (cm)
P320200UA	with EPDM seals	1	0,102	7,6	28x55x55
P320201UA	with Viton seals	1	0,102	7,6	28x55x55

⚠ ATTENTION: only for system 40 cm

#### Transparent tank 6 L with coloured cap complete with key



REF.	NOTES	PCK	VOLUME (m³)	GROSS WEIGHT (kg)
P210017TA	with EPDM seals		10	0,144
P210017TB	with EPDM seals		10	0,144
P210022TA	with Viton seals		10	0,139
P210022TB	with Viton seals		10	0,139



#### Tray for mop soaking



REF.	NOTES
P110004A	

#### Standard key



REF.	NOTES
P110014U	

It allows to regulate the dosage, lock the tank and close the cap

# Mop soaking systems



## MOP SOAKING ON DEMAND AND PRE-SOAKING SYSTEM

### Kit key to dose cleaning solution



REF.	NOTES
0000SM00286	

It allows to regulate the dial independently from the rest of the system with a specific key, different from the standard one - **This option enable to a single operator to adjust the right quantity of cleaning solution**

### Grey plastic bucket 4 L with coloured plastic handle on the edge



REF.	NOTES	SIZE (cm)
0000SE0204U		16,5x21x22,5
0000SE0204UA		16,5x21x22,5
0000SE0204UB		16,5x21x22,5
0000SE0204UC		16,5x21x22,5
0000SE0204UF		16,5x21x22,5



### Transparent plastic cover with hinges



REF.	NOTES
0000CP1204T	for bucket 4 L art. 0000SE0104
0000CP1205T	for 4l bucket item no. 0000SE0204
0000CP1206T	for bucket 6 L

### Set for Equodose wall mounting



REF.	NOTES
0000SM00612	

### Kit to fix Equodose on Morgan trolleys



REF.	NOTES
0000SM00613	



# Mop soaking systems

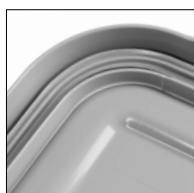
## MOP SOAKING ON DEMAND AND PRE-SOAKING SYSTEM

### Buckets and drawers for pre-soaking system

#### TOP-DOWN® - plastic bucket with plastic handle and hermetic cover



REF.	NOTES	CAPACITY (L)	PCK	VOLUME (m³)	GROSS WEIGHT (kg)	SIZE (cm)
0000SE1308A		8	5	0,043	3,46	17x36x23
0000SE1308B		8	5	0,043	3,46	17x36x23
0000SE1308C		8	5	0,043	3,46	17x36x23
0000SE1310A		10	5	0,094	7,45	24x55x19
0000SE1310B		10	5	0,094	7,45	24x55x19
0000SE1314A		14	4	0,086	6,63	20x77x18
0000SE1314FT		14	4	0,086	6,63	20x77x18
0000SE1322A		20	4	0,094	6,93	24x55x27
0000SE1322B		20	4	0,094	6,93	24x55x27
0000SE1322U		20	4	0,094	6,93	24x55x27



They are the ideal solution for cloth soaking procedures

#### Plastic divider for Top-Down® bucket 20 L

REF.	NOTES	PCK	VOLUME (m³)	GROSS WEIGHT (kg)
P190350E		5	0,024	2,67



The specific plastic reducer is ideal to keep the mop compact inside the bucket and to make it easier to pick up them from the bucket directly with the mop holder

#### Pierced plastic sieve for Top-Down® bucket

REF.	NOTES	PCK	VOLUME (m³)	GROSS WEIGHT (kg)	SIZE (cm)
P1190041U	for Top-Down® 8 L	9	-	1,52	33,3x14,2x2,2
P1190042U	for Top-Down® 10 and 20 L	10	0,031	4,24	54x20x3



Ideal for a uniform distribution of the cleaning solution - For a quick pre-soaking (max 15 minutes)



# Mop soaking systems



## MOP SOAKING ON DEMAND AND PRE-SOAKING SYSTEM

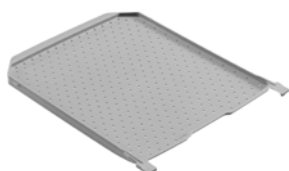
Plastic sliding drawer without locking key



REF.	NOTES	CAPACITY (L)	PCK	VOLUME (m³)	GROSS WEIGHT (kg)	SIZE (cm)
P1229909U	internal dimensions 41x34x9,5 cm	10	14	0,181	13,79	46,5x37,5x11
P1229906U	internal dimensions 40,5x34x16 cm	22	12	0,181	16,3	46,5x37,5x17



Pierced plastic sieve for mop soaking fitting drawers 10, 22 and 40 L

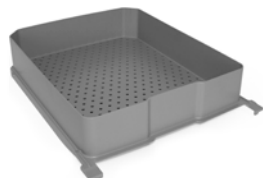


REF.	NOTES	PCK	VOLUME (m³)	GROSS WEIGHT (kg)
P1909925U		10	0,038	5,69



Ideal for a uniform distribution of the cleaning solution - For a quick pre-soaking (max 15 minutes)

Pierced plastic sieve with high border for mop soaking fitting drawers 10, 22 and 40 L



REF.	NOTES
P1909961U	



Ideal for a uniform distribution of the cleaning solution - For a quick pre-soaking (max 15 minutes)

Plastic cover for drawers 10, 22 and 40 L



REF.	NOTES	PCK	VOLUME (m³)	GROSS WEIGHT (kg)
P1909933U		10	0,038	7,21



Graduated plastic jar



REF.	NOTES	PCK	VOLUME (m³)	GROSS WEIGHT (kg)
P191000T	3 L	12	0,073	2,96
P192000T	0,5 L	80	0,079	3,84



# Mop soaking systems

## MOP SOAKING ON DEMAND AND PRE-SOAKING SYSTEM

### Click Safe System

Plastic bucket 20 L with plastic handle



REF.	NOTES	PCK	VOLUME (m³)	GROSS WEIGHT (kg)	SIZE (cm)
0000SE1222A		10	0,169	12,6	24x55x27
0000SE1222B		10	0,169	12,6	24x55x27
0000SE1222U		10	0,169	12,6	24x55x27



Plastic lid for Click Safe system

**NEW**



REF.	NOTES	PCK	VOLUME (m³)	GROSS WEIGHT (kg)	SIZE (cm)
P190360U		10	0,056	3,4	55x23x12



Rilsan coated bucket holder for 10/20 liter buckets, to be applied at the base of Alpha trolleys

**NEW**



REF.	NOTES	PCK	GROSS WEIGHT (kg)
R2200045		1	2,3



Mesh bag with closing string

**NEW**



REF.	NOTES	CAPACITY (L)	PCK	GROSS WEIGHT (kg)	SIZE (cm)
0000AT0214B	stabilized polyester	35	1	0	65x46





## MOP SOAKING ON DEMAND AND PRE-SOAKING SYSTEM

### Trolley for the buckets transport

**POCKET** - foldable metal trolley for Top-Down® buckets 10 and 20 L



REF.	NOTES	PCK	VOLUME (m³)	GROSS WEIGHT (kg)
V2030122		10	0,07	14



Rilsan coated trolley for Top-Down® buckets 10 and 20 L, with wheels ø 170 mm



REF.	NOTES	PCK	VOLUME (m³)	GROSS WEIGHT (kg)
R2030120		2	0,21	8,06



Fitting Morgan trolleys art.no. 0000MP8010A and 0000MP8020A

Rilsan coated trolley kit with wheels ø 200 mm with trolley locking device and fixing hooks, for Top-Down® buckets 10 and 20 L



REF.	NOTES	PCK	VOLUME (m³)	GROSS WEIGHT (kg)	SIZE (cm)
R3030162		2	0,21	11,06	32x60x94



Fitting Alpha trolleys - Recommended with supporting plate cod. P065060U



SEE MOPS/CLOTHS RANGE AND RELATED MOP HOLDERS IN THE FLOOR CLEANING LINE

**По вопросам продаж и поддержки обращайтесь:**

Алматы (7273)495-231  
Ангарск (3955)60-70-56  
Архангельск (8182)63-90-72  
Астрахань (8512)99-46-04  
Барнаул (3852)73-04-60  
Белгород (4722)40-23-64  
Благовещенск (4162)22-76-07  
Брянск (4832)59-03-52  
Владивосток (423)249-28-31  
Владикавказ (8672)28-90-48  
Владимир (4922)49-43-18  
Волгоград (844)278-03-48  
Вологда (8172)26-41-59  
Воронеж (473)204-51-73  
Екатеринбург (343)384-55-89  
Иваново (4932)77-34-06  
Ижевск (3412)26-03-58  
Иркутск (395)279-98-46  
Казань (843)206-01-48  
Россия +7(495)268-04-70

Калининград (4012)72-03-81  
Калуга (4842)92-23-67  
Кемерово (3842)65-04-62  
Киров (8332)68-02-04  
Коломна (4966)23-41-49  
Кострома (4942)77-07-48  
Краснодар (861)203-40-90  
Красноярск (391)204-63-61  
Курск (4712)77-13-04  
Курган (3522)50-90-47  
Липецк (4742)52-20-81  
Магнитогорск (3519)55-03-13  
Москва (495)268-04-70  
Мурманск (8152)59-64-93  
Набережные Челны (8552)20-53-41  
Нижний Новгород (831)429-08-12  
Новокузнецк (3843)20-46-81  
Ноябрьск (3496)41-32-12  
Новосибирск (383)227-86-73  
Киргизия +996(312)-96-26-47

Омск (3812)21-46-40  
Орел (4862)44-53-42  
Оренбург (3532)37-68-04  
Пенза (8412)22-31-16  
Петрозаводск (8142)55-98-37  
Псков (8112)59-10-37  
Пермь (342)205-81-47  
Ростов-на-Дону (863)308-18-15  
Рязань (4912)46-61-64  
Самара (846)206-03-16  
Саранск (8342)22-96-24  
Санкт-Петербург (812)309-46-40  
Саратов (845)249-38-78  
Севастополь (8692)22-31-93  
Симферополь (3652)67-13-56  
Смоленск (4812)29-41-54  
Сочи (862)225-72-31  
Ставрополь (8652)20-65-13  
Сургут (3462)77-98-35  
Казахстан +7(7172)727-132

Сыктывкар (8212)25-95-17  
Тамбов (4752)50-40-97  
Тверь (4822)63-31-35  
Тольятти (8482)63-91-07  
Томск (3822)98-41-53  
Тула (4872)33-79-87  
Тюмень (3452)66-21-18  
Ульяновск (8422)24-23-59  
Улан-Удэ (3012)59-97-51  
Уфа (347)229-48-12  
Хабаровск (4212)92-98-04  
Чебоксары (8352)28-53-07  
Челябинск (351)202-03-61  
Череповец (8202)49-02-64  
Чита (3022)38-34-83  
Якутск (4112)23-90-97  
Ярославль (4852)69-52-93